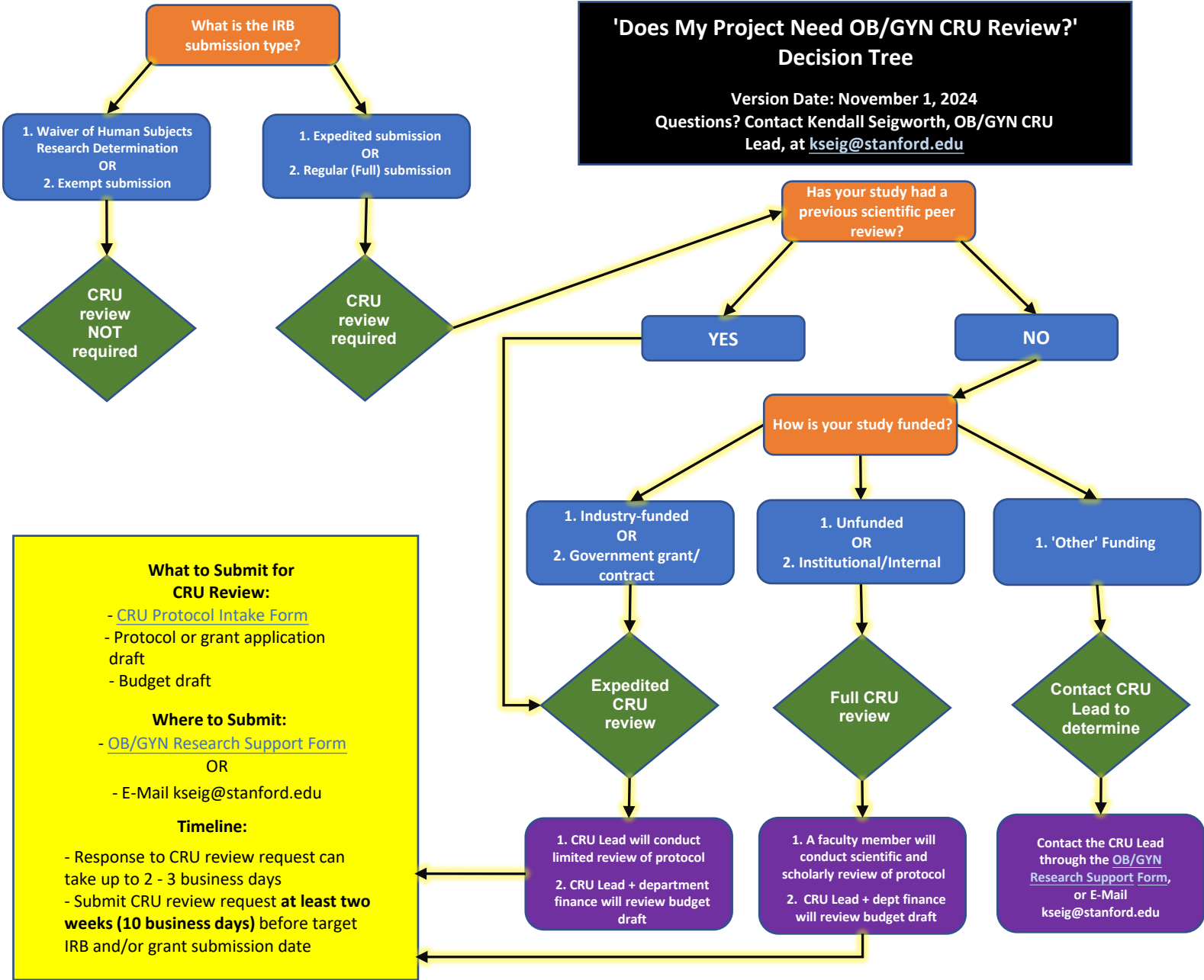


'Does My Project Need OB/GYN CRU Review?'

Decision Tree

Version Date: November 1, 2024

Questions? Contact Kendall Seigworth, OB/GYN CRU Lead, at kseig@stanford.edu



What to Submit for CRU Review:

- [CRU Protocol Intake Form](#)
- Protocol or grant application draft
- Budget draft

Where to Submit:

- [OB/GYN Research Support Form](#) OR
- E-Mail kseig@stanford.edu

Timeline:

- Response to CRU review request can take up to 2 - 3 business days
- Submit CRU review request **at least two weeks (10 business days)** before target IRB and/or grant submission date